

## HILL STREET MAYFAIR, W1J

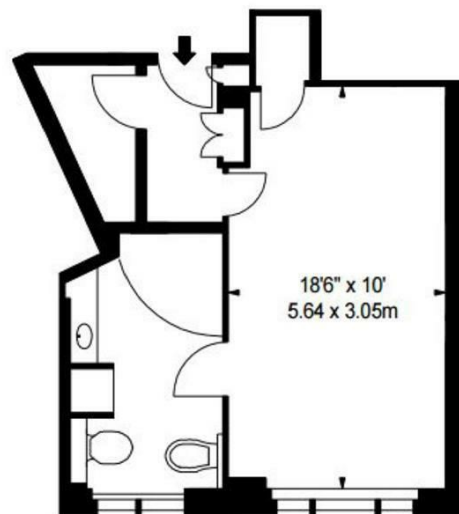
£630 PER WEEK

A well presented studio apartment on the sixth floor of this beautiful red brick building, situated in the heart of London's fashionable Mayfair. The apartment comprises a large living room area, modern bathroom and a unique kitchenette.

Hill Street, benefits from spacious living accommodation, lift service, on-site building manager, and is nestled conveniently between two of London's parks Hyde Park and Green Park. With great transport links only a short stroll away including Green Park, Bond Street and Marble Arch stations.

**PMP** | INTERNATIONAL

APPROX. GROSS INTERNAL AREA \*  
333 Ft<sup>2</sup> - 30.94 M<sup>2</sup>  
ILLUSTRATION FOR IDENTIFICATION PURPOSES ONLY. NOT TO SCALE  
\* As Defined by RICS - Code of Measuring Practice



FIFTH FLOOR



Energy Efficiency Rating		
	Current	Potential
Very energy efficient - lower running costs		
(92 plus) A		
(81-91) B		
(69-80) C		
(55-68) D		
(39-54) E		
(21-38) F		
(1-20) G		
Not energy efficient - higher running costs		
England & Wales	EU Directive 2002/91/EC	

Agents Note: Whilst every care has been taken to prepare these particulars, they are for guidance purposes only. All measurements are approximate and are for general guidance purposes only and whilst every care has been taken to ensure their accuracy, they should not be relied upon and potential buyers/tenants are advised to recheck the measurements

London  
PMP International  
94 Belsize Lane  
Belsize Park  
London  
NW3 5BE

020 7701 2878  
info@pmpi.co.uk  
www.pmpi.co.uk

PMP INTERNATIONAL